

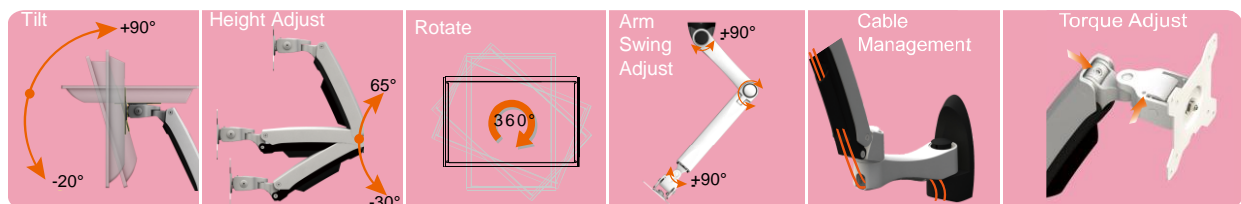
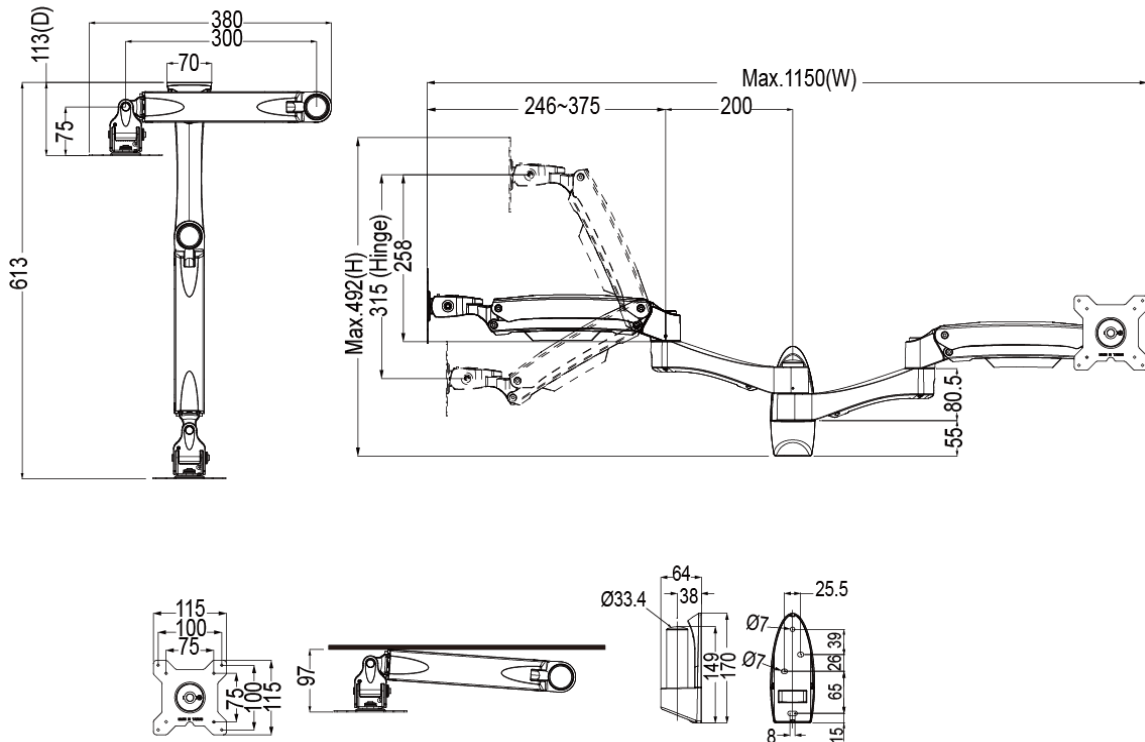


Wall mount for 2 monitors

Model :ATW40

SPECIFICATIONS

Mounting Pattern	100x100 / 75x75 mm
Screw Type	M4
Material	Steel/Aluminum Alloy/Plastic
Dimension(W*H*D)	1150*492*113 mm(45.28"x18.35"x4.45")
Weight(Net)	3.90 Kg (8.60 lbs)
Swivel(Hinge)	+/-90°
Tilt(Hinge)	+90° / -20°
Tilt(Arm)	+65° / -30°
Support Weight (Range)	2~10Kg(4.4~22.1lbs)
Support Flat Panel Size	≤24"
Max. Distance To The Wall	613mm (24.13")
Min. Distance To The Wall	97mm (3.82")
Rotate(Pivot)	360°
Extended Arm Provided	4
Height Adjustment Range(Hinge)	315mm (12.40")



Ladders & Hardware Pte Ltd | Jia Ying Trading Pte Ltd

1 Rochor Canal Road #02-37/67 Sim Lim Square Singapore 188504 Tel: 6336 0404 Fax: 6338 0404
www.jiaying.com | www.laddersandhardware.com | jiaying@singnet.com.sg | email@jiaying.com